



round



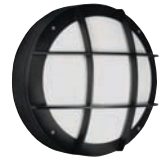
round 1



round 2

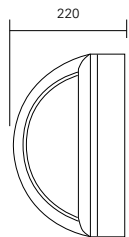
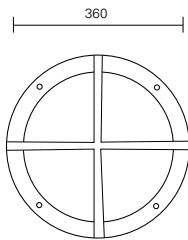


round 3

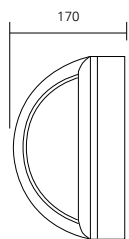


round 4

round



round 1 only



dimension (mm)

RANGE

A comprehensive range of attractive surface mounted luminaire with integral control gear for use of 100W TH Tungsten Halogen, 18-26W PLC compact fluorescent, 21-28W 2D compact fluorescent lamp.

APPLICATION

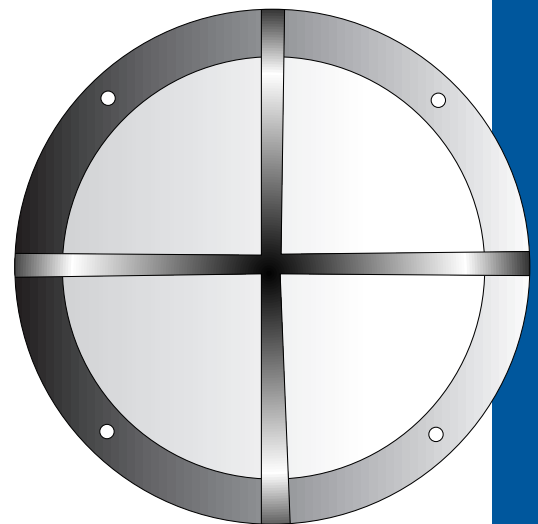
An impressive that will luminate, monuments, building facades, wall and gardens and playground.

CONSTRUCTION

The body is made from corrosion resistant die-cast aluminium with a polyester powder coating. The opal polycarbonate diffuser with UV stabilized additive to against vandalism; and the flame is attached to the body via 4 stainless steel screws. A silicon rubber-sealing gasket provides ingress protection IP65.

CHARACTERISTICS

- Optical assembly : IP 65
- Ballast Compartment : IP 65
- Electrical Insulation : Class 1
- Voltage : 220V~240V
- Wattage : 80W~100W
- Lamp Type : Incandescent, PLC, PLT, HPS, MH, MBF
- Dimensions (mm) : $\varnothing 360 \times 220(W)$ (round 1)
: $\varnothing 360 \times 170(W)$
- Lamp Holder : E27, G24d-3, Gx24q-3



Model No.	Description	Voltage	Frequency	Lamp
GPCP0638	ROUND 100W INCANDESCENT	220-240V	50-60Hz	E27
GPCP0639	ROUND 2x18W PLC C/W Gear & Lamp	220-240V	50-60Hz	G24d-3
GPCP0640	ROUND 2x42W PLT C/W Gear & Lamp	220-240V	50-60Hz	G24d-3
GPCP0641	*ROUND 70W HPS C/W Gear & Lamp	220-240V	50-60Hz	E27
GPCP0642	*ROUND 70W MH C/W Gear & Lamp	220-240V	50-60Hz	E27
GPCP0643	*ROUND 80W MBF C/W Gear & Lamp	220-240V	50-60Hz	E27

*Applicable for round 1 only

ordering information