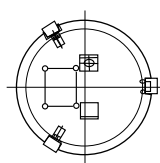
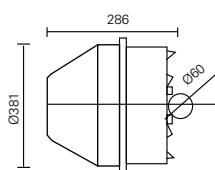
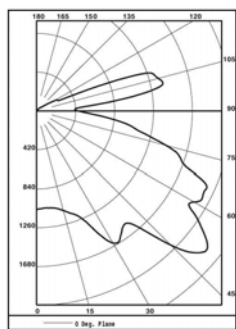




## tosca



dimension (mm)



tosca 150W HPS

### ADVANTAGES

- Compact, low profile
- High performance and easy maintenance
- Fully aluminium and polycarbonate
- Natural light beam distribution

### APPLICATION

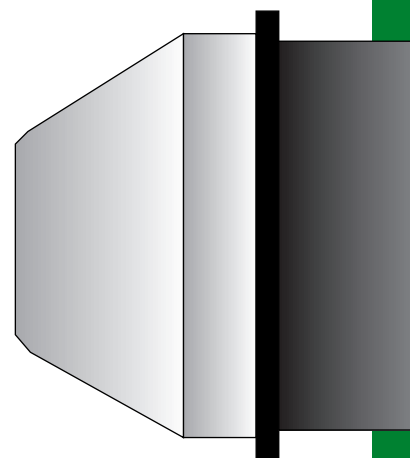
- Factories, assembly plants, warehouse, parking Garages
- Petrol station, gymnasium, sport hall and commercial
- Suggested mounting height: 2.5 ~5m

### FEATURES

- Die cast aluminium ballast housing.
- Finish with epoxy polyester powder paint- Standard colour Black.
- Wide light distribution with up-light component.
- UV stabilized polycarbonate moulded refractor resistant to thermal shock and impact.
- Weatherproof and durable silicon sealed rubber gasket.
- Very efficient for low ceiling mounting.
- Ceramic lamp holder – Standard E27 and E40 (depending on lamp).
- Emergency switch quartz system available upon request.

### CHARACTERISTICS

- Optical assembly : IP 65
- Ballast Compartment : IP 65
- Electrical Insulation : Class I
- Voltage : 220V/380V
- Wattage : 70W ~ 150W
- Lamp type : HPS, MBF and MH
- Dimensions (mm) : Ø381(L) x 286(H)
- Approx. Net weight : 5 ~ 8 kg



Model No.	Description	Voltage	Frequency	Lamp
GPL00279	GRUPPE TOSCA (EMPTY)	220-240V	50-60Hz	E27/E40
GPCP0656	TOSCA 70W HPS C/W Control Gear & Lamp	220-240V	50-60Hz	E27
GPCP0657	TOSCA 150W HPS C/W Control Gear & Lamp	220-240V	50-60Hz	E40
GPCP0658	TOSCA 70W MH C/W Control Gear & Lamp	220-240V	50-60Hz	E27
GPCP0659	TOSCA 100W MH C/W Control Gear & Lamp	220-240V	50-60Hz	E27
GPCP0660	TOSCA 150W MH C/W Control Gear & Lamp	220-240V	50-60Hz	E27
GPCP0661	TOSCA 80W MBF C/W Control Gear & Lamp	220-240V	50-60Hz	E27
GPCP0662	TOSCA 125W MBF C/W Control Gear & Lamp	220-240V	50-60Hz	E27

# ordering information