



pro 400

ADVANTAGES

- Architectural stylish appearance
- Fully aluminium and glass
- High performance & easy maintenance

APPLICATION

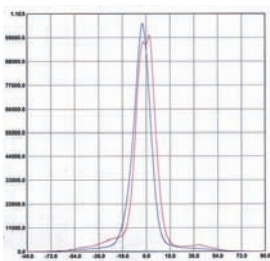
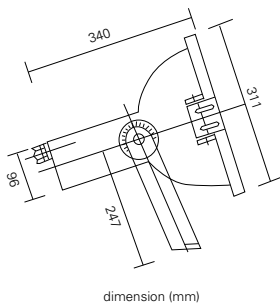
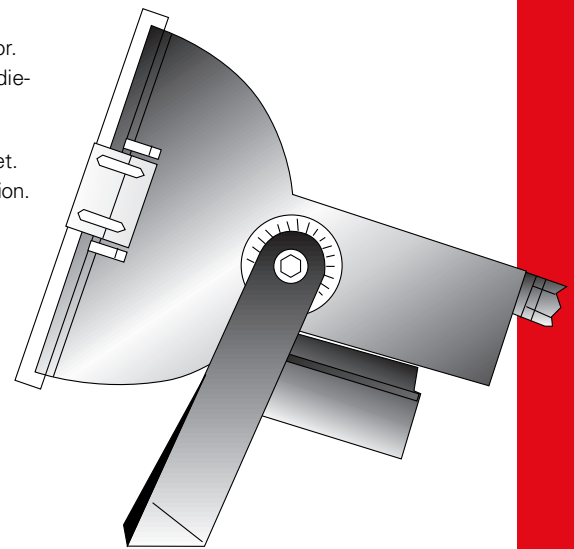
- Facades, building, column, monument, signages
- Parking area, sport area, architectural, landscapes

FEATURES

- Die cast aluminium housing and frame.
- Finished with epoxy powder paint, resistant to corrosion.
- Integral control gear. Standard colour – Black.
- Anodised finished on hydroformed aluminium reflector.
- Thermal, shock resistant tempered glass in a hinged die-cast aluminium frame.
- Stainless steel locking devices.
- Weatherproof and durable silicon sealed rubber gasket.
- Provides narrowed and wide beam photometric distribution.
- Ceramic lampholder and silver plated contact – Standard E40.
- Accessories available on request.

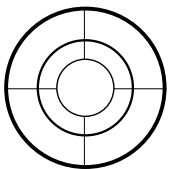
CHARACTERISTICS

- Optical assembly : IP 65
- Ballast Compartment : IP 65
- Electrical Insulation : Class 1
- Voltage : 220V~240V 50/60 Hz
- Wattage : 150W~400W
- Lamp type : HPS or M/H
- Dimensions (mm) : ø311 x 340(L)
- Approx. Net weight : 9~12 kg

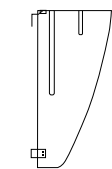


Pro 400 400W MHL

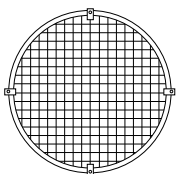
Accessories



Steel protection louvre



Steel anti-glare louvre



Safety steel grid

Model No.	Description	Voltage	Frequency	Lamp
GPCP0001	PRO 400 150W HPS C/W Control Gear & Lamp	220V-240V	50-60Hz	E40/Rx7s
GPCP0002	PRO 400 250W HPS C/W Control Gear & Lamp	220V-240V	50-60Hz	E40/FC2
GPCP0005	PRO 400 400W HPS C/W Control Gear & Lamp	220V-240V	50-60Hz	E40/FC2
GPCP0417	PRO 400 150W M/H C/W Control Gear & Lamp	220V-240V	50-60Hz	E27/Rx7s
GPCP0003	PRO 400 250W M/H C/W Control Gear & Lamp	220V-240V	50-60Hz	E40/FC2
GPCP0006	PRO 400 400W M/H C/W Control Gear & Lamp	220V-240V	50-60Hz	E40/FC2

ordering information