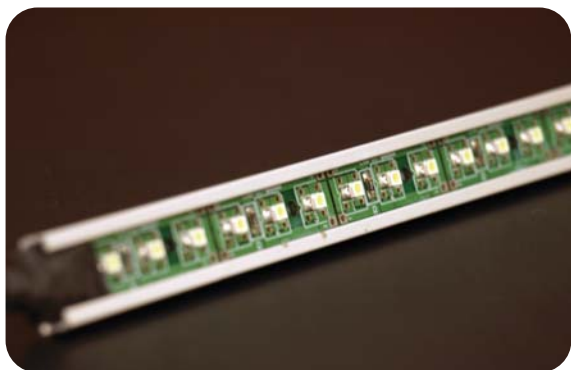
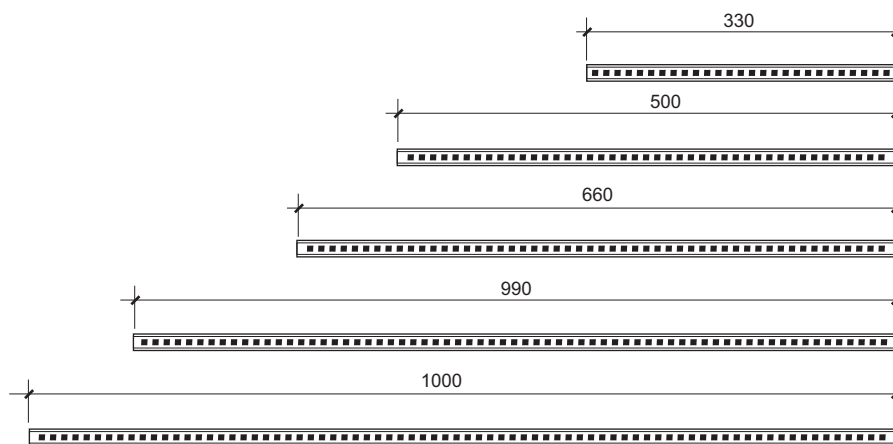
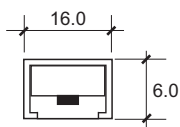




# linear SLED



The SLED is made feasible for interior, exterior or submersible lighting requirement. With its slim profile, SLED can be discreetly mounted. The beam output gives a clean and even wash of light.



sled -    -   -

<b>SOURCE</b>	LED
<b>LUMENS</b>	300-700 / meter
<b>LAMPLIFE</b>	50,000 HRS
<b>INPUT VOLTAGE</b>	12VDC
<b>OPERATING TEMP</b>	-10°~60°
<b>PROTECTION RATING</b>	IP68

COLOR CODE	COLOR	BEAM ANGLE	POWER (WATTS)	PROJECTION DISTANCE	HOUSING DESCRIPTION	GEAR/CONTROLS	SIZE (MM)	SCHEMATIC DIAGRAM
WARM	3000K	120°	7.2W/M 15W/M	N.A.	ANODIZED ALUMINUM EXTRUSION BODY	REMOTE DRIVER + DMX DECODER (DMX CONTROLLABLE)	LENGTH	see Appendix
COOL	5500K						330/500/630/ 990/1000	
ORED	RED						WIDTH	
OGRN	GREEN						16.0	
OBLU	BLUE						HEIGHT	
ORGB	RGB						6.0	

\*\*The company is constantly developing and improving its products. All descriptions, illustrations, and specifications mentioned present only general particulars and shall not form any part of any contract. The right is reserved to change specifications without prior notice.

\*\*FILL UP ORDERING REFERENCE ACCORDINGLY > example: NAME -     -    -